

Supportive Parents provide a confidential service

**Information** – about all aspects of special educational needs (SEN)

**Support** – telephone information and support line, face-to-face, support for meetings, help with written information.

**We** are a registered charity managed by a board of Trustees and with a small membership.

## **Supportive Parents**

**3rd Floor  
Royal Oak House  
Royal Oak Avenue  
Bristol BS1 4GB**

**Information & Support: 0117 9897725  
10 am – 2 pm Mon, Wed & Fri during term time  
Answer phone at all other times  
Admin/Fax: 0117 9897724  
Web: [www.supportiveparents.org.uk](http://www.supportiveparents.org.uk)  
Email: [mail@supportiveparents.org.uk](mailto:mail@supportiveparents.org.uk)**

*If you need this document in a different format such as Braille, large print, audio tape or computer disk, or in community languages, please contact us.*



Registered in England and Wales as Supportive Parents for Special Children Company Limited by Guarantee No. 3905996

Registered Charity No. 1079761

**Working in Partnership with**

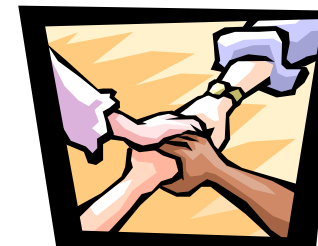


**Supportive Parents**

Registered Charity No. 1079761

*Parent  
Partnership  
Service for  
South  
Gloucestershire*

Local Co-ordinator  
Anne Jerrom





Telephone  
Information and  
Support Line  
10 am – 2 pm  
Mon, Wed & Fri  
during term time  
0117 9897725

# SUPPORTIVE PARENTS

We are a parent-led organisation providing a confidential and independent parental support service to parents and carers of children with any kind of special educational needs (SEN).

We offer information and support to enable parents to play a more active and informed role in their child's education.

We aim to encourage parents and professionals to work more closely together in the interest of the children, and to voice the views of parents and raise awareness of SEN.

## What we offer

### Telephone Support

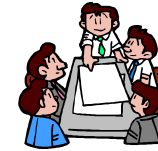
Our Information and Support Line is staffed by two trained Parent Supporters between 10am - 2pm Monday, Wednesday and Friday during term time. An answer phone operates at all other times. A reduced service operates during school holidays.

### Paperwork

We can help you with paperwork for school based and statutory assessments, e.g. parental contributions, reviews and Individual Education Plans (IEP).

### Meetings

We offer support to help you prepare for meetings with schools or the Local Authority. We may also be able to provide support at the meeting.



Support group meetings

### Face to face support

Monthly support group meetings are held in Yate. For details phone the Information and Support Line or ask your school.

### Training

Our training courses for parents give you further information about special educational needs issues. It also offers the opportunity for you to become a Parent Supporter, giving support to other parents.

### Website

For more information about our service (and much more) visit [www.supportiveparents.org.uk](http://www.supportiveparents.org.uk)